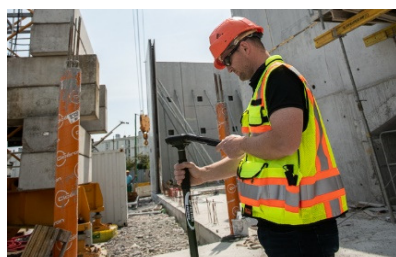


## OFERTĂ DE PREȚ SP20

### Receptor GNSS Spectra Precision SP20



**SPECTRA**<sup>®</sup>  
GEOSPATIAL



Receptor GNSS Spectra Precision SP20 240 canale  
GPS L1C/A, L1P(Y), L2P(Y), L2C, GLONASS L1C/A, L2C/A  
BeiDou B1 (phase 2), B2, Galileo E1, E5b, QZSS L1C/A, L2C, L1SAIF  
SBAS L1C/A, L-band  
RTK, NTRIP&Direct IP  
Categorii de precizie: metri, sub metri (30/30), dm (7/2), cm  
Precizie in regim RTK: Orizontal 10 mm + 1 ppm, Vert. 15 mm + 1 ppm  
Capabilitate receptie corectii Centerpoint RTX  
Tehnologie Z-Blade GNSS-Centric  
Formate de date ATOM, CMR, CMR+, RTCM 2.1, 2.3, 3.0-3.2, CMRx  
Initializare GPS/GLONASS/BeiDou sau combinat, Instant-RTK 2 s  
Sistem de operare Android 6.0  
Procesor Quad-core Qualcomm Snapdragon 410, 1.2 Ghz  
Memorie 2 GB SDRAM, 16 GB storage, card MicroSDHC 64 GB max.  
Comunicatii CSM/GPRS/EDGE/UMTS/WCDMA/TDSCDMA/LTE-TDD  
Wi-Fi 802.11 b/g/n, Bluetooth 4.0 dual, USB micro, NFC  
Display 5.3' capacitiv, vizibil la soare, 1280x720 pixeli, Gorilla-Glass  
Baterie Li-ion 6400 mAh detasabila, operare cu GNSS pornit min. 8 ore  
Camera frontala/spate 13 MP/2 MP, E-Compass, G-Sensor, difuzor/mic  
Sistem de montare pe jalon  
Optional Jalon mono fibra de carbon 160 Euro + TVA

P/N	Varianta*	Pret de lista fara TVA	Disc.	Pret special fara TVA
114819-00	SP20 meter	2,999.00 €	30%	2,099.30 €
114819-00	SP20 sub-meter (30/30)	4,299.00 €	30%	3,009.30 €
114819-02	SP20 dm (7/2)	5,699.00 €	30%	3,989.30 €
104234-03	SP20 cm	7,399.00 €	30%	5,179.30 €

\*Soft de teren MapSys Android 10, MobileMapper Field sau Survey Mobile neinclus in pret

#### Conditii de vanzare:

Valabilitate oferta: In limita stocului disponibil  
Termen de livrare 3 zile  
Garanție standard 12 Luni + 12 luni gratuit  
Accesorii incluse  
Livrare gratuita

Data:  
17-Jan-19